



KULTURNÍ DĚDICTVÍ
ŠUMAVY

KULTURERBE DES
BÖHMERWALDES

„DATABASE AND MANUAL OF CULTURAL HERITAGE
SOUND TOURISM – CHANCE FOR ŠUMAVA BIOSPHERE RESERVE“

ACTIVITY REPORT – NOVEMBER 30th, 2007



Ústav systémové biologie
a ekologie
AKADEMIE VĚD
ČESKÉ REPUBLIKY



Table of content

1	Abstract	3
2	Methodological considerations	5
2.1	Study territory	5
2.2	Cultural heritage	7
2.3	Standardization	9
3	Competences and Players	10
3.1	Šumava National Park and Protected Landscape Area administration.....	10
3.2	National Institute for Monument Preservation	10
3.3	Museums	11
3.4	Libraries	11
4	Data sources	12
4.1	Czech Statistical Office	12
4.2	Ing. arch Karel Kuča	12
4.3	National Institute for Monument Preservation	12
4.4	Expert studies	13
4.5	Other studies and publications.....	13
5	Creation of a synthetic data base, data merging, standardization, and imputing	14
5.1	Data base structure	14
5.2	Data merging	14
5.3	Model software	15
6	User interface	17
6.1	State of the art	17
6.2	Geographical Information System	17
7	Reporting	19
8	Further developments	20
8.1	Integration of international sources	20
8.2	Major supporting organization	20
8.3	Intangible cultural objects	20
8.4	Anticipated short run time schedule	21
8.5	Financing	22
9	Team and partners	24
9.1	References	24
9.2	Cooperation and sponsorships	25
10	Literature	27

1 Abstract

The project relates to the concept of cultural heritage in the area of interest which is the UNESCO biosphere reserve Šumava.

Cultural heritage in Šumava, a border ridge between three countries, is a multifaceted thing. Furthermore, in respect of German-Czech neighbour relations and European history the situation is, indeed, unique. Capturing the resulting phenomenon incl. vanishing traditions has a much deeper impact on the understanding of cultural heritage than a formal database like historical monument filing may indicate.

The project is to set up a database for cultural heritage in the UNESCO Šumava biosphere reserve, and is a part of the broader project "Sound tourism – chance for Biosphere reserve Šumava". The project was to concentrate on setting up, activating and, for the regional and local administrative and planning authorities, to provide access to an information basis on types and objects of cultural heritage in the geographical area of interest as a basis for the development of adequate products of sound tourism which are directed towards improving the attractiveness and popularity of cultural heritage in the border region.

The creation of the data base and making the data from various sources compatible took advantage from nationwide used standards as prepared for example by professional authorities. In order to guarantee an unambiguous identification of localities we chose „kód CZ" as being introduced by the Society for the Renewal of Small Towns and Villages. This concept, in addition to the concept of basic units of settlement, encompasses all existing and extinct towns, market- towns, and villages. „kód CZ" also takes into consideration some further localities such as hamlets e.g. castles and farmsteads standing by themselves. All these localities are identified by coordinates and so they are ready for use in GIS.

Collection, classification, and stratification of data as well as the development of a user interface prototype rely to a great extent on a conceptual model relating to applied specializations like historical monument preservation and management of museums and culture as well as to scientific disciplines like ethnology, archaeology, history, culturology, linguistics, demography, sociology, and others.

The data as processed in the study represent the state of development on November 30th 2007 where there is reliable information on more than 3.500 immobile objects of cultural heritage at our disposal. The data have been drawn, in the first instance, from available sources. i.e. digitalized and pre-processed evidence of historical monument preservation authorities, museums, and other organizations commissioned by the state or self-administration. The archives of individual specialists became a significant source of data. In addition to the filing of physical immobile and mobile monuments, we also included immaterial, intangible objects of cultural heritage and, thus, integrated pilot elements.

The study, with the assistance of a relational database and the prototype of a user interface, summarizes, arranges, and supplies data on selected objects and topics of cultural heritage. In respect of the comprehensiveness of the topic, this report has the character of the description of the state of the art, but also of a feasibility study for further development and the multitude of its potential value added also in an international context.

The main outputs of the project are

- a uniquely comprehensive set of information on cultural heritage of Šumava as organized in the form of a relational data bank and accessible to the public
- a user interface prototype enabling to edit, view, and retrieve its content and providing the potential to produce reports on a variety of topics and questions with respect to the cultural heritage of Šumava.
- a report for self-government, as a case study, showing the results of the research, data collection and processing, and summing up the available sources on cultural heritage for regional planning purposes as well as to improve the communicational competence of the representatives of this community.

The project outputs reflect the state of efforts on November 30th 2007. These outputs provide the users with a comprehensive file of available valid and reliable information. Of course, there remains a lot of white spots on the research map to be worked out as yet. leaving the subject open for further international efforts.

The question of a proper definition of the borders of „Šumava“ which, in the past, has been mainly answered in terms of administrative affiliation has been resolved for this study by expanding the study territory to the whole forest including also the foothills which, under geomorphologic considerations, belong to the „Šumava“ hills. This has been carried out using geographical coordinates. For the purposes of this report on the biosphere reserves, we have drawn localities and objects from the whole data bank.

We consider Šumava, which may be characterized as a deep border forest, sparsely populated with only a small number of settlements, but with a rich history, to be an ideal model territory. It is possible to stepwise concentrate

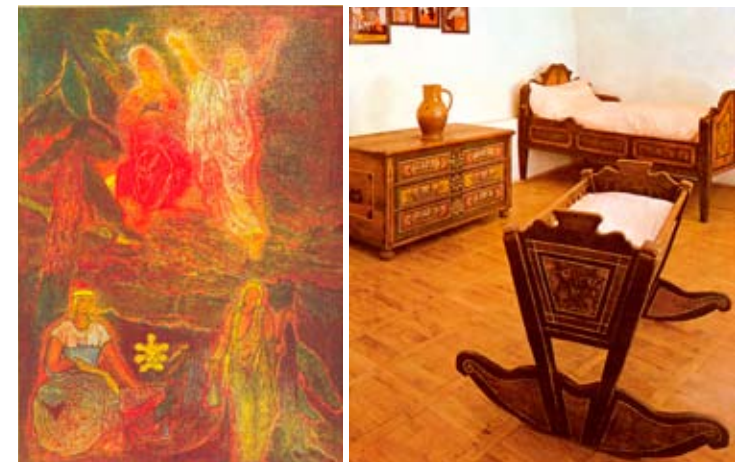
on individual aspects of the manifold information on former and current population, the life styles of these population groups, persistent and vanishing, physical and immaterial, intangible culture. From a researcher's and a politician's point of view, it is an attractive opportunity to merge information from various sources which in the past were separated from each other on the Czech, the German, and the Austrian side of the border, to integrate individual results from scientific-based research efforts, and to acquire university and scientific centres for international cooperation. Together with a rather robust and universal Czech-German information basis, the project provides the possibilities to develop even very sophisticated products of sustainable or cultural tourism.

2.2 Cultural heritage

The concept of cultural heritage is a rather open concept. The Convention for the Protection of Cultural and Natural Heritage gives an enumerative definition of what we should understand cultural heritage to be (UNESCO 1972):

- monuments as architectural creations, monumental sculptures and paintings, archaeological objects or inscriptions and caves
- ensembles of single or related buildings
- sites as human creations or common human and natural creations

For the most part, it relies on applied specializations like historical monument preservation and management of museums and culture, which primarily are based on spatially and historically determined value systems and relations. Besides, on these grounds also act state administrations, self-government authorities, inhabitants, entrepreneurs, and – tourists, The decision of what is to be considered to be a cultural heritage object to be object of preservation actions, is made by expert evaluation relying on a well-defined set of rules under the assumption of consensus of local players. This is also the pragmatic starting-point of this project.



Cultural heritage objects are considered to be (preserved) physical „tangible“ immobile and mobile artefacts as well as immaterial, mental or social „intangible“ phenomenon, especially traditions and habits reflecting lifestyles and values “...oral traditions and expressions, including language as a vehicle of the intangible cultural heritage; performing arts; social practices, rituals and festive events; knowledge and practices concerning nature and the universe...” (UNESCO 2003).

Therefore, we may think of the building of a glass factory, the inventory of a chaple deposited in a museum, a traditional fire brigade ball, a demographic study on second homes or the text of a novel playing in the locality as some of these objects. Cultural heritage objects may be static, i.e. present like a preserved, sedimented state, and, at the same time, a dynamic, time-dependent process of changes and the beginning of new culture and traditions. This project on Šumava is dominated by the „broken history“ and the repeated colonization of the original cultural settings putting weight especially on the innovation of new and the doomed parts of cultural heritage. It is the object of this project to provide a unifying, as broad as possible, but meaningful and accessible platform for the presentation of cultural heritage objects



2.3 Standardisation

The information system to be continued to be set up and its users have to understand each other. Therefore, it is necessary that both are speaking the same language. Existing variants for the same objects (e.g. Zbyněk Fišer = Egon Boudy) must be unified or standardized. In ČR this is accomplished by the National Library Prague by providing, already for some years, word-books which are accessible on-line. These are provided on the basis of so-called National Authorities Notifications where in the development of which cooperated dozens of scientific libraries. These notifications exist for nominal objects (natural and corporate persons, actions, geographical terms) and partly also for matters-of-fact (topical words and descriptors). These naming conventions are a device for unification of selection expressions (look up-variables), giving collateral information for the identification of the proper name. A thesaurus integrates the expressions (in a semantic sense) into hierarchical structures, gives equivalent expressions, superordinates and subordinates. The real content and sense of the phrase will not be disclosed before its entry into an encyklopaedia, using predefined descriptors (word-book, keyword).

In this context, what cultural heritage is concerned, some specialists in the fields of architecture are most advanced (in the project represented by Ing. arch. Karel Kuča) as well as ethnologists and ethnographers (in the project represented by the director of the Institute of Ethnology of the Academy of Sciences of ČR PhDr. Zdeněk Uherek, CSc.).

A newly opened chapter by its own is the German side of the project. Therefore, all project output will be produced also in German. The project is designed to be compatible with concurrently developed systems as the ones at the Czech Statistical Office (which is in the project represented by the regional commissioner Ing. Jan Honner).

3.3 Museums

It is mainly the following museums

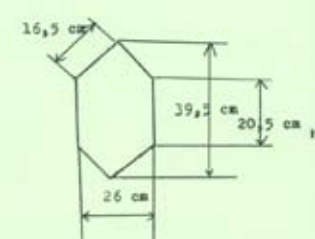
- South Bohemian museum in České Budějovice
- Prachatice museum in Prachatice
- Regional museum in Český Krumlov
- Šumava museum in Sušice with subsidiaries in Kašperské Hory and Železná Ruda
- and the Dr. Hostaš museum for local history in Klatovy

which on behalf of the district are occupied with this topic. To these museums also belong the museums of JUDr. Otakar Kudrna in Netolice and the City Museum of Volary. The development of an electronic, database-bound evidence of collections and exhibits in the fields of museums as being pushed by the Moravian District museum in Brno and the National Museum in Praha are in state of beginning. It may be concluded, however, that these developments are in the direction the National Authorities Directives of the National Library Praha. This is the also way we are going.

The creation of a system interface will, however, be dependent on the type and process of digitalisation in various institutions. Important will be, in the case of choice and classification of objects, the outcome of expert opinions in museums which will be respected to be obligatory similarly like in the case of the National Institute for Monument Preservation.

3.4 Libraries

The South Bohemian Scientific Library in České Budějovice encompasses a specialized regional section which is operating in respect of cataloguing and providing information services according to the same principles as the Studies and Scientific Library in Plzeň and the National Library in Praha. These standards are, for the purposes of this study, binding.

Museum Summary			
Objekt: lidové umění	Průběh: lidové pedmalba na skle: fantaz. ornament s květy a ptáčky	Lokalita: Šumava	C. inv.: LU-685
Stavba: Malby na skle	/ 6 - dlelníkové deska /	Uložení: deska /	C. příj.: 476/80
Místní: koupě od M. Šaldové z K. Her 11-16/80 VII. 2000		Místo: Kašperské Hory - depozitář Uzd. M. Herpolicák Datum: 26.1. 1980	C. dep.: 26-11-80
<p>lidové pedmalba na skle: fantaz. ornament s květy a ptáčky / na 6- dlelníkové desce / - zlaté, hnědé, modrá, červená, sluté, černá</p>			



4 Data sources

This project is highly interdisciplinary and integrative, but it is also empirical where we intend to present very precise results for very tangible (and intangible) objects. Therefore, not only methodological problems had to be resolved. We also had to take care about competent sources for valid data. These sources are presented here. Most of these may be found to be part of the specialist community as in further detail described above. In detail, we are referring to

- data of the Czech Statistical Office describing the state and the development of localities in the model area;
- data of Ing. arch. Kuča and Society for the renewal of small towns and villages on localities and immobile objects of cultural heritage in the model area;
- data as provided by historical monument protection authorities on protected and selected unprotected objects of cultural heritage in some parts of the model area;
- data as provided by other persons and institutions also relating to mobile cultural heritage objects
- material on immaterial, intangible cultural heritage objects especially from professional publications

4.1 Czech Statistical Office

A set of 23 xls-files on administrative, demographic, and historical data has been provided by the České Budějovice branch of Czech Statistical Office. The data sets as well as the statistical yearbooks on demographics date back as far as to 1869. Unfortunately, there does not exist a consistent framework that would enable us to straightforwardly and uniquely identify localities and parts of municipalities over time. Many localities have lost their original German names with Czech authorities only partly keeping track of the „name history“ of municipalities. Furthermore, a significant number of localities vanished or was destroyed during 20th century. Official sources not completely document these changes¹. The relevant sources are distributed over a series of statistical yearbooks and other publications². The years between 1938 and 1947 offered at special problem, because the German Sudet statistics³ use other administrative statistics.

1) For parts of municipalities and populated localities with the exception of smaller localities and hamlets see e.g. Ružková/Škrabal 2006

2) See e.g. Anděra./Zavřel 2003.

3) See Sudetendeutsches Archiv 1987

4.2 Ing. arch. Karel Kuča

A data set as provided by Ing. arch. Karel Kuča consists mainly of two dbf-tables related by a key. The first table contains characteristics for so-called localities, a geographical concept which goes beyond the rather administrative concept of „part of municipality“ or „settlement“ as being used by the Czech Statistical Office (20th and 19th century). The localities are described by a series of historical and actual data on the names of the localities, the history of administrative affiliation, its real present existence etc. For the most part of the localities the data set contains point coordinates.

The second table contains immobile cultural heritage objects for some of these localities. The table on cultural heritage objects encompasses a large set of such objects which became extinct or have been destroyed or abandoned during World War II, by military defence actions as carried out by the Czech communist government or construction activities e.g. Lipno water reservoir.

The data set also contains many immobile cultural heritage objects that are not covered by protection of historical monuments authorities because of the fact that they are not protected according to the relevant legal regulations.

4.3 National Institute for Monument Preservation

The data sets provided by protection of historical monuments authorities in České Budějovice and Plzeň are, as a rule, rich in terms of information on history, physical state, and evaluation of objects. These data sets are said to encompass the whole files of culture heritage objects registered as protected. The data set from Western Bohemia also contains many photographs useful for illustration. The description of these objects, although being very detailed and competently carried out, however, is limited in respect of consistent structuring and hence, the information provided is not readily understandable and stratification as well as comparison is not straightforward.

4.4 Expert studies

Some of the shortcomings of the datasets of protection authorities in respect of the objectives of this study. are partly remedied by detailed studies and data sets as provided by interested persons inside and outside of these authorities. These studies, as a rule, relate to certain types of cultural heritage objects and are geographically limited.

It is especially this latter type of datasets which provide us with data on mobile objects of cultural heritage that are related to the immobile objects, e.g. inventory of churches which has partly been brought to museums either as exhibits or to museum inventory or to parishes for safekeeping where these objects may not even be open to the public

4.5 Other studies and publications

There is whole score of publications, especially with a local history background, which are using data as published by the Czech Statistical Office⁴. These publications, however, make no efforts to generate time series of important characteristics such as demography and ethnology and to overcome some of the methodological problems preventing from time series approaches.

In order to catch data on mobile physical exhibits illustrating every day's life and its change over time we took advantage of various professional publications, e.g. from museums and authors working in close cooperation with museums.

Because of the lack of respective data collections we were, in the case of immaterial, intangible cultural objects such as traditions and customs, forced to rely on respective professional publications. This also holds true for literature, painting, and photographing. These may considered at one hand to be art, on the other hand, however, popular culture, historical documentation and a dimension of informal touristic capital.

4) see e.g. Honner, J., Prokopová 1992

5 The creation of a synthetic data base . data merging, standardization, and imputing

5.1 Data base structure

We identified the following objects of importance for this project all of which are represented in the integrated database by a series of tables:

- localities including settlements as well as hamlets, and abandoned or destroyed settlements
- material (physical) immobile objects of cultural heritage
- material (physical) mobile objects of cultural heritage
- immaterial, intangible cultural objects (such as habits of the population, novels citing locations and/or objects of cultural heritage, and paintings showing sites and objects of cultural heritage); intangible cultural objects are also historical events

All these tables are related among each other by keys.

Furthermore, there exists a set of so-called look up-tables containing all the relevant and all the permitted realizations of characterizing variables. The lookup tables consist of tables containing all feature characteristics that for a certain variable (like type of object) possible, appropriate or permitted, allowed. These tables are a result from our standardization efforts, where we took advantage from the above mentioned work results of. At the same time, these possible realizations of a certain variable provide a consistent framework for identifying and standardization of the cultural heritage reality as being found in the model area. This makes it, however, necessary to impute realizations of the relevant descriptors there where these data are missing or where other standards for evaluation were utilized. On the other hand, these lookup tables provide possibilities for rapid retrieval of data or information as being provided by the database.

Another important type of table is what we call a resource table. These resource tables relate to files containing resources like pictures, photographs, texts, literature, authors, historical persons etc. These resources itself are stored mainly outside the Access-database e.g. in the form of txt-, doc-, pdf-, jpg- or bmp-files. The resource tables may be interpreted as a link between the topic/object under investigation and the resources that for this object are available

5.2 Data merging

In the case of physical objects of cultural heritage, the task consisted not only of a simple merging of various data sets with an identical list of variables and characteristics for disjunctive sets of objects, e.g. one consistent set for one district (kraj) but in

- setting up a survey of data sets referring to different kinds of cultural heritage objects and to different
- setting up a merge plan identifying missing areas of coverage of cultural heritage objects by the data sets as well as obvious redundancies
- setting up a standardized set of variables which is to be applied to
 - a) immobile and b) mobile cultural heritage objects
- setting up reliable and consistent, standardized classification catalogues to assist in identification, classification and stratification of all the relevant objects.
- rules of assigning data or information from the various original data sets to the target data set
- rules of identifying redundancies and to cope with redundant data
- definition of indicators relating to the touristy attraction of either single cultural heritage objects or ensembles thereof and the empirical deduction of attractiveness values from existing secondary data.

Taking advantage of the Kuča data, together with the data of the Czech Statistical Office, we were able to set up a, in large parts, consistent, reliable, and comprehensive framework of „localities“ in Šumava encompassing even hermitages and uninhabited localities as location of immobile monuments. Because of existing deficiencies in description of data an intertemporal matching and renaming of municipalities and especially parts thereof was necessary.

As pointed out above, the Kuča data set does not contain many of the monuments and objects as registered by protection authorities. Also, the list of characteristics as covered by this data set is rather limited as compared with some data which have been provided by protection of historical monuments authorities both from the Southern an Western Bohemian county in České Budějovice and Plzeň respectively.

Nevertheless, these two data sets together with some in depth studies give us a broad and valid data set for immobile cultural heritage objects. Because of the facts, however,

- that the study entities are not disjunctive, and
- especially the Kuča data on extinct and existing objects do not encompass necessary information for unique and straightforward identification,

the existing database may contain some redundancies where the Kuča data set was „enriched“ with data from the other relevant data sets.

With museum depositories starting to be recorded in relevant museums we have to rely on data as provided by protection authorities leaving us at this stage of the study, alas, with a white spot on the map of cultural heritage objects.

What objects of intangible cultural heritage is concerned, we are confronted with a huge stock of primary data and material which we have started to record and to categorize.

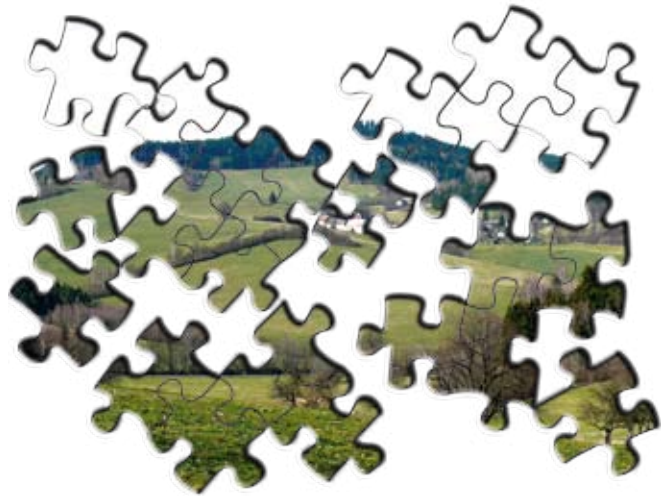
5.3 Model software

In order to minimize costs at a satisfactory level of flexibility and quality it was decided that the project database will be organized as a relational database where the relations are between tables instead of objects. The extension to a object-related database will be implemented in the period of adapting of the database and the user interface to the needs and demands of users. Instead, several “satellite” tables enable us currently to “simulate” and object-relational database.-

The user interface has been programmed using Microsoft’s Visual Basic 6, where the connection to the Access-mdb-file is organized using Active Data Objects (ADO). This way, we are left with the option using the programme to produce Active Server Pages (ASP).

Code	Category	Sub-category
2.1.1	2. Státní dům a bytoven	Kulturní krajina
2.1.2		Průmysl a vesnice
2.1.3		Státní dům a bytoven
2.1.4		Průmysl a vesnice
2.1.5		Kulturní krajina
2.1.6		Průmysl a vesnice
2.1.7		Státní dům a bytoven
2.1.8		Průmysl a vesnice
2.1.9		Státní dům a bytoven
2.1.10		Průmysl a vesnice
2.2.1	2. Státní, Haus und Wohnen	Kulturdenkmäler
2.2.2		Naturdenkmäler
2.2.3		Städtische Denkmäler
2.2.4		Städtische Denkmäler
2.2.5		Städtische Denkmäler
2.2.6		Städtische Denkmäler
2.2.7		Städtische Denkmäler
2.2.8		Städtische Denkmäler
2.2.9		Städtische Denkmäler
2.2.10		Städtische Denkmäler

• CULTURAL HERITAGE OF ŠUMAVA – CONCEPT ENCYCLOPEDIA DATA BASE:



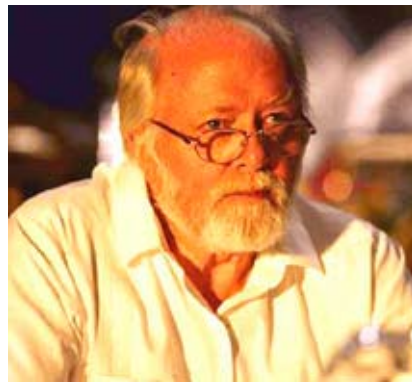
Šumava – Data domain



Data registration



Data merging



Experts



Data packaging



Data input and standardisation



Data interface



Data providing

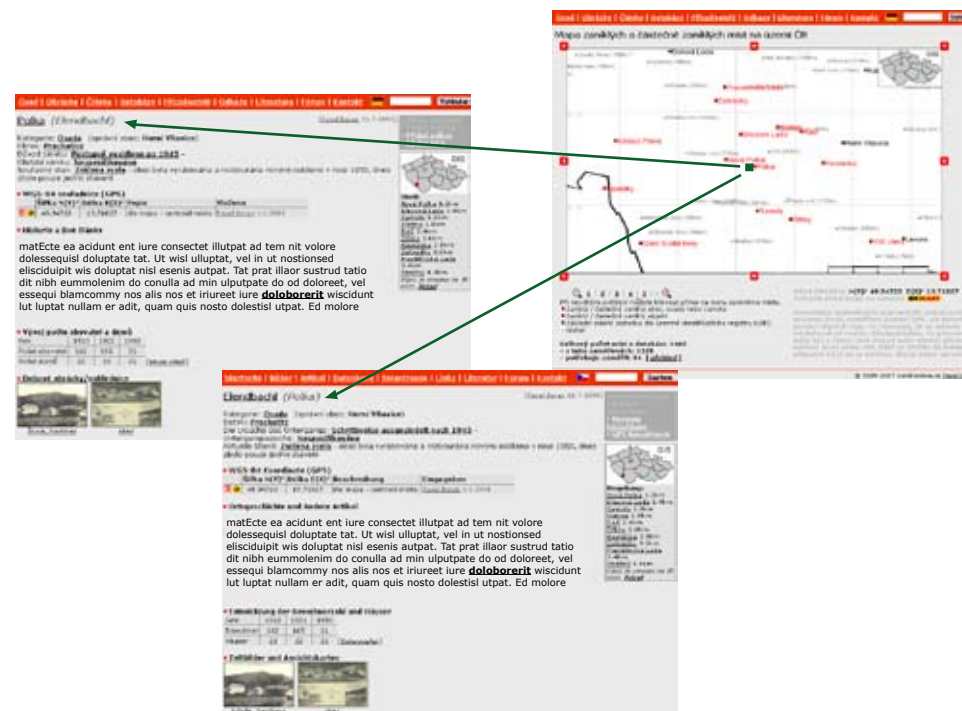
6 User interface

6.1 State of development

At present, the user interface is mainly a menu-guided set of forms and frames which enables the user to input new data, edit existing data, delete existing data (without physically deleting them) and view data. where the single text fields and grids suit the variable definition in the relevant database tables. Besides the possibility of extensive viewing, sorting, and stratifying data the interface enables the user to start for given objects predefined reporting procedures. These reports can be produced ad hoc as doc- and as html-files. The interface is at present in Czech language where the menus are available also German and English

6.2 Geographical Information System

The implementation of a Geographical Information System (GIS) will be a further step in data processing and visualization of study results of the cultural heritage database. Taking advantage of the geographical approach to the questions under consideration, either in the form of points and coordinates or in the form of polygons (a GIS-object defining shapes and areas) it will be possible to delimitate, define, process, interpret and present multilevel information on settlements and artefacts not only on the grounds of Šumava. By applying standardized approaches to selected objects (in this regard the cooperation with Mrs. Zdenka Řezníčková, director of the Šumava Museum and Přemysl Řezníček, GIS-specialist at the Ministry of the Environment) and the assignment of geographical coordinates according to GPS and S-JTSK, we are able to delimitate and identify individual cultural heritage objects and, thus, causing a significant shift in traditional coordinates of monument preservation concepts.



www.zanikleobce.cz

We will be enabled to merge information on one object which otherwise would not be feasible. We may summarize data on one object from different sources and different proveniences and specializations. We may integrate data from outside the originally limited study territory, e.g. with respect to trade roads or town centres without administrative and time limitations. Having a look at the study territory we should not overlook, in a geomorphological and historical sense, that foothills belong to Šumava. In doing so, we are not far from extending the project area to the whole district.

The Association for Renewal of Villages and Small Towns is working with such a GIS. Author of the factual part is Karel Kuča, author of the technical solution is Zuzana Syrová. A similar GIS is also to be developed by monument preservation authorities. Here, localities are understood to be all either existing or extinct (physically and/or administratively) settlements (towns, market-towns, villages, hamlets), which, as a rule, are or were populated, that is in modern terminology „parts of municipality“; exclusive local parts and hermitages (only selectively). This system (as worked out by Zuzana a Jiří Syrových), allows to take care of unprotected objects as well. It is based on the state evidence of buildings where every existing building has been assigned a unique code, which will be incorporated into the system. Some objects (chaples, small memorials) are, of course, unregistered. For these a code will be imputed. We are talking about an open system where missing elements are, according to identified needs, added in successive steps. This also holds true for extinct objects.

Basis for a GIS-application is a table in dbf (VisualFoxPro 8.0) format, which is ready for use. Its projection to ArcGIS 9.2 is a shapefile, which will be available at the end of 2007 where coordinates complement the polygons. Within the framework of a relational databank it is via „kód cz“ related to the table with the polygons of historical settlements, again as dbf-table.

In order to meet the requirement that geographical coordinates and the GIS-application convene with actual state administration efforts as regards monument preservation (see tasks of the National Institute for Monument Preservation for the years 2007–2008) or, in the case of setting up of land and development plans, self-administration. Last but not least, it is the powerful possibilities of a GIS to visualize study results and database contents, which support the development services and products of sound and cultural tourism.

7 Reporting

Taking advantage of the user interfaces reporting capabilities, there has been produced a report for the municipalities' mayors in the model area. This report has two parts, an overview part and a detailed part. The overview part is available for all municipalities. The detailed part, at present, is only being outputted for the municipality Volary (Southern Bohemia).

The overview part of the report contains general information on the presence and the history of the municipalities and the parts there of to which also belong the so-called localities in the sense of this study. Table 1.2 shows all the localities of the municipality Volary including their (original) German name and gives the number of protected memorials. Furthermore, it indicates whether these people are living in the Šumava NP and PLA Šumava. Using the data available from 1910, the table also gives an idea on the ethnological background of the population. Under the light of newly available data the figures will be revised and appended to show figures for all localities.

Table 1.3 documents our efforts to integrate a variety of sources to arrive at consistent and comprehensive time series on population in the localities. For the larger localities, parts of municipalities and the municipalities this is more or less straightforward although even here various incorporations of locations and changes of affiliations still should be taken into account. Some of the localities like Hus show zero inhabitants where this is a castle site which is no settlement. For other localities these figures are to be integrated as yet. This also holds true for 1939 and 1947 figures from German statistics. Here, the methodological discontinuities may not be neglected.

The figures, however, make clear, that the population, mainly being German, is stable or even increasing in the period from 1869 until the outset of the second world war. They also reflect the displacement and dispossession of the German population after 1945 and a second decrease in population figures after the communist take over. Presently, in the Šumava live, depending on locality, a lot less people than before world war II.

The general part for localities⁵ (as part of the municipality) contains also a table which summarizes the immobile (protected or unprotected) cultural heritage objects. Further tables show the history of the names of the locality and of the administrative affiliation.

The detailed part of the report describes and evaluates each immobile cultural heritage object on the ground of the respective municipality as covered by the various data sets integrated in the database. A sample page for one immobile cultural heritage object is in appendix.

8 Further developments

8.1 Integration of international sources

The project has been, from the very beginning, set up to be compatible with ongoing efforts in the fields of monument preservation, state administration organization, self-administration, especially with library systems, museums, and pedagogical institutions. It integrates information sources from the Czech, German (Bavarian) and Austrian side being separated so far. It ensures the integration of results from individual studies from various specializations opening the view for new research challenges. The internationality of the team will be further widened. It significantly expands the variety of culture heritage objects by relating to works of fine arts, literature, music, and popular arts. It makes all the available information accessible in Czech, German, and English.

The project is assuming international cooperation with scientific and university institutions. It is a highly visible step towards a new understanding of Czech–German relationships. It shows a high synergetic potential for ongoing Czech–German projects and such projects which are in preparation.

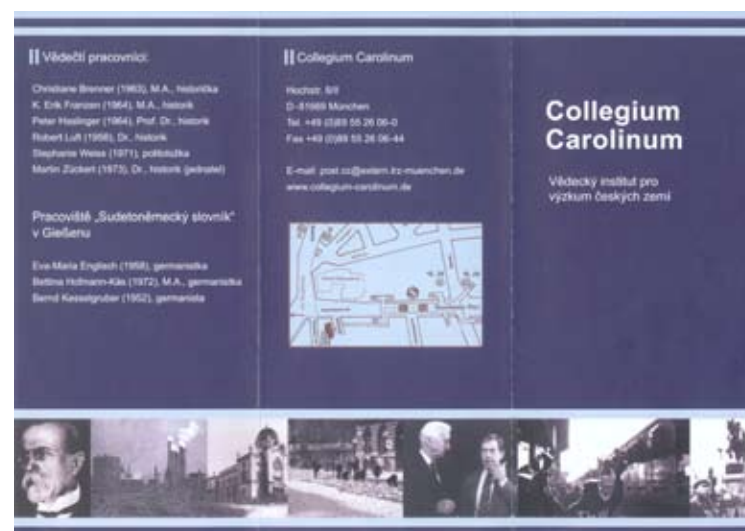
8.2 Major supporting organization

Therefore, the project as it is presented here, is completely compatible with the ongoing efforts of specialized and state institutes. For some of the significant tasks to be accomplished by state authorities it offers solutions including promising procedures to improve the efficiency of memorial protection and nature preservation and, therefore, may be apt to change some basics of current state of practice. Being aware of this the South Bohemian region considers seriously to get involved in this development and, consequently, to become major supporting organization of these future developments. Clearly, the project has a significant impact for a broad, specialized community of researchers, scientific and educational institutes, as well as for representatives of self-administration and the interested public.

8.3 Intangible cultural objects

What Šumava is concerned, the activity of literary portals like <http://www.kohoutikriz.org>, Karl Klostermann or Adalbert Stifter clubs should not remain unmentioned. From these organizations we expect the necessary support in order to complete the planned comprehensive literature modules the first of which will be devoted to the work of Karel Klostermann, Czech author of Šumava with German family background.

This modules together with the anticipated tools on public culture like architecture, music, dance, festivities, folklore etc, we do not consider to be a primary task of local and regional authorities.



8.4 Anticipated short run time schedule

phase 0	until November 30 th 2007 set up a data model and a manual of cultural heritage for the study territory Šumava, proving the feasibility of the study
phase 1	until June 30 th 2008 execution project, organizational and financial safeguarding, software, action team
phase 2	until June 30 th 2009 choice, classification, indexing, documentation; data processing, set up a prototype and a pilot database system, GIS and other user interface developments
phase 3	processing of results and experiences, publication of existing version Czech-German information bank on cultural heritage objects Šumava – Kulturerbe des Böhmerwaldes in three languages including intangible cultural objects

- concentrate means and forces in the years 2008–2012 to take advantage of the extraordinary synergetic potential to define further projects for the European Union, UNESCO, state administration, self-administration and other commissioned organizations
- guarantee a sustainable institutional development of the project, update and propagate the database, support the preservation of values as being built during centuries, support cultural identity and diversity, serve as a revisional support factor in respect of the relationship between man and landscape and, last but not least, support sound and sustainable tourism.

Future steps, as a consequence, will be

- publish a Czech-German information bank and make it accessible, set up relevant and acceptable user interfaces, create and support user-specific products for municipalities, cities and regions research and specialized institutions, schools, information and tourist centres, and for propagation activities of regions.

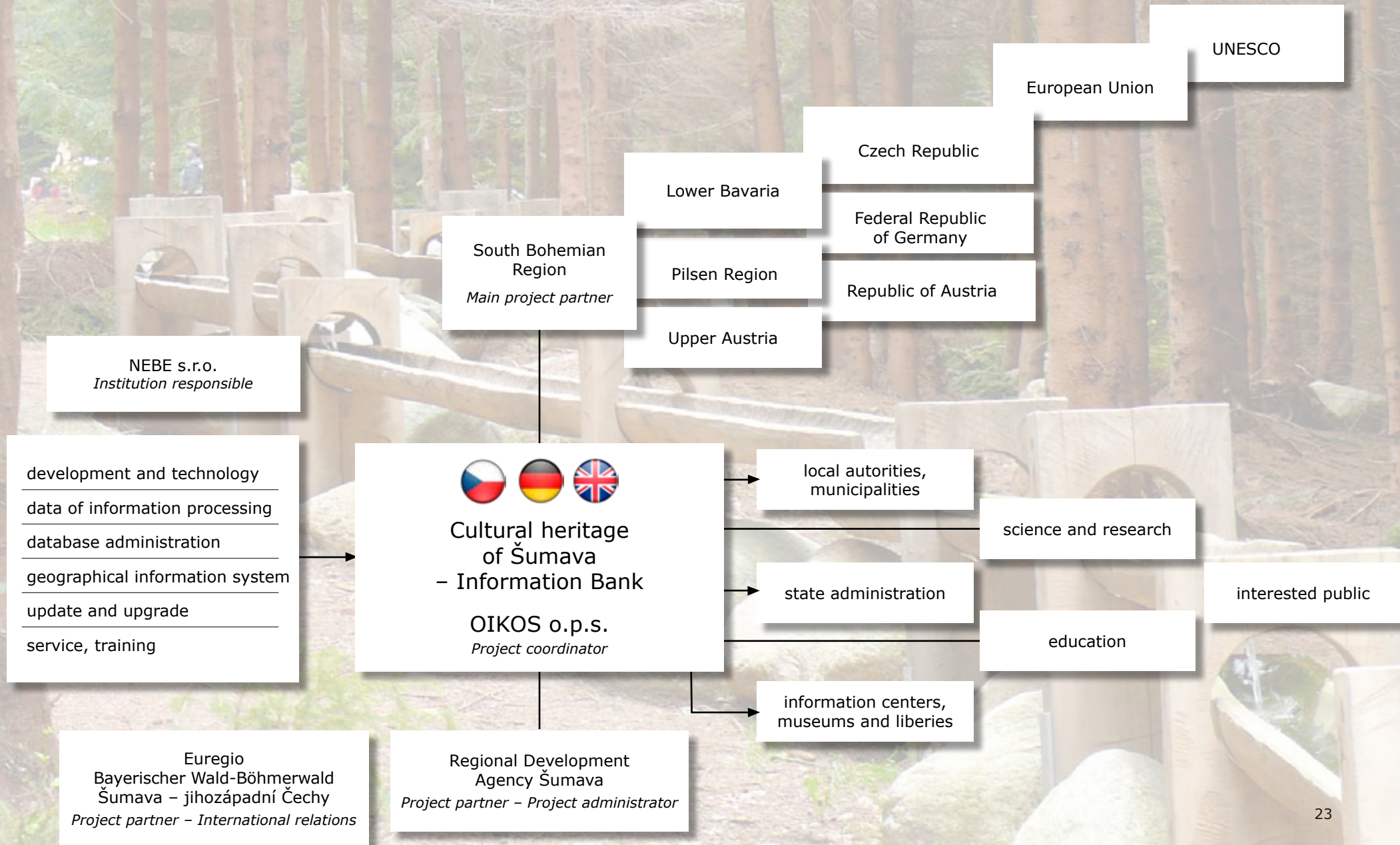
8.5 Financing

Preparatory efforts and the setting up of a concept of a data model were part of the project "Sound tourism – chance for Šumava biosphere reserve". In order to carry out an execution project and to construct a sustainable database skeleton it is necessary to acquire, together and with the assistance of the main project supporting partner, further funds from the EU. By realization of further project phases the project teams awaits the creation and implementation of user-specific applications and modules which may be, according to their respective objectives, financed on a ad hoc basis where the following organizations will be of importance:

To be appreciated are synergy effects with individual projects e.g. within the framework of cross-frontier cooperation like the anniversary year 2008 of K. Klostermann, university „On-line courses for teaching history“ or related activities of German partners. Similar synergy effects are to be expected from projects on preserving cultural heritage which are already completed, e.g. renewal of small sacral objects and the Adalbert Stifter anniversary 2005.

for specialized development	UNESCO, Grant Agency of the Czech Republic
regional development	South Bohemian region, Ministry for regional development ČR, Ministry for the environment ČR and corresponding organizations and institutions in Germany and Austria
cultural development and international relations	operational programmes within cooperation ČR – Bavaria and ČR – Austria financed by ERDF, grants from ministry of culture, Czech-German Future Fond, and other cultural players where the respective efforts may not be consider a primary task of the state, local, or regional authorities

• **CONCEPT OF FOLLOW-UP PROJECT**



9 Team and partners

9.1 References

PhDr. Zdeněk Uherek, CSc.	director of Institute of Ethnology of the Academy of Sciences of ČR, Praha 2
Ing. arch Karel Kuča	architecture consultant, Praha 6
Dr. rer. pol. Rudolf Dennerlein	EuroConsult, Nové Kestřany
Ing. Jan Honner	regional commissioner for the South Bohemian district of the Czech Statistical Office in České Budějovice,
PhDr. Vladimír Horpeniak	historian, Šumava Museum Kašperské Hory
Willi Steger	chairman of the „K. Klostermann – Dichter des Böhmerwaldes“ – association, Grafenau,
Commissioned institute	OIKOS o.p.s., České Budějovice
Main supporting partner	South Bohemian region, České Budějovice
Associated partners	Regional Development Agency Šumava, Stachy Euroregion Šumava – South western Bohemia, Klatovy Euroregion Bavarian forest – Šumava – Lower Inn River, Freyung Euroregion Bavarian forest – Šumava – Regional Management, Mühlviertel
Project team	NEBE s.r.o. České Budějovice

9.2 Cooperation and sponsorships

Archive of the City of Plzeň, Plzeň
Association Karel Klostermann – novelist of the Šumava, Srní
Association Karl Klostermann – novelist of the Šumava, Grafenau
Bavarian State Library, Munich
Centre for Municipal Works in Southern Bohemia, České Budějovice
Collegium Carolinum, Munich
Community Foundation Blanicko – Otavská, Protivín
Czech Office for Surveying Mapping and Cadastre, Praha
Czech Statistical Office, České Budějovice
Czech-German Future Fond, Prague
Euregio Bavarian Forest – Šumava – Lower, Freyung
Euregio Bavarian Forest – Šumava, Freistadt
EuroConsult, Strakonice
Euroregion Šumava – South Western Bohemia, Klatovy
German Museum, Munich
Historical Institute of the Academy of Sciences ČR, Praha
Charles University, Praha
Institutum Beatae Mariae Virginis, Castle Štěkeň
Institute of Ethnology of the Academy of Sciences of ČR, Praha
Institute of Systems Biology and Ecology of the Academy of Sciences,
ČR České Budějovice
KUČA Karel, Ing. arch. – R2 COMP
Ludwig-Maximilian-University, München

Moravian Museum, Brno
Museum of Central Dr. Hostaše, Klatovy
Museum for the Middle Otava Basin Strakonice
Museum of Prachatice, Prachatice
Museum of Prácheň, Písek
Museum of the Bohemian Forest, Passau
Museum Šumavy, Sušice (Kašperské Hory, Železná Ruda)
National Institute for Monument Preservation, České Budějovice, Plzeň
National Institute for Popular Culture, Strážnice
National Library ČR, Praha
National Museum, Praha
Regional Development Agency Šumava, Stachy
Society for the Renewal of small towns and villages, Brno
Society Three Countries, Passau
South Bohemian museum, České Budějovice
South Bohemian Scientific Library, České Budějovice
South Bohemian University, České Budějovice
State District Archive in Třeboni, SOKA Český Krumlov, Prachatice,
Strakonice
Studies and Scientific Library of the Plzeň District and City Library of Plzeň,
Plzeň
Šumava National Park and PLA administration, Vimperk
University of Passau, Passau

Districts of

- Lower Bavaria
- South Bohemia
- Upper Bavaria
- Upper Austria
- Upper Palatinate
- West Bohemia

Ministries:

- Bavarian State Ministry for Regional Development, München
- Bavarian State Ministry for Environmental Issues, Health, and Consumer Protection, München
- Bavarian State Ministry for Education and Culture, München
- Federal Ministry for Forestry and Agriculture, Environment and Water Management, Wien
- Federal Ministry for Education, Art, and Culture, Wien
- Ministry for Culture ČR, Praha
- Ministry for Regional Development ČR, Praha
- Ministry for the Environment ČR, Praha

Anděra, M., Zavřel, P., Šumava: příroda, historie, život, Praha (Nakladatelství Miloš Uhlíř – Baset), 2003

Bernhardt, T., Jelen, J., Šumava bez hranice, Plzeň, Zwiesel (Starý most), 2006

Haller, M., Bernhardt, T., Böhmerwald grenzenlos, Plzeň, Zwiesel (Starý most), 2006

Honner, J., Prokopová, Š. Šumava v roce 1991, České Budějovice, Plzeň (Krajská správa Českého statistického úřadu v Plzni; Krajská správa Českého statistického úřadu v Českých Budějovicích), 1992

Ružková, J., Škrabal, J. Historický lexikon obcí České Republiky 1869–2005, II. díl, Praha (Český statistický úřad), 2006

Sudetendeutsches Archiv und Institut für Landeskunde, Collegium Carolinum, Sudetendeutsches Ortsnamenverzeichnis. Amtliches Gemeinde- und Ortsnamenverzeichnis der nach dem Münchner Abkommen vom 29. 9. 1938 (Grenzfestlegung vom 20. 11. 1938) zum Deutschen Reich gekommenen Sudetendeutschen Gebiete, München (Verlagshaus Sudetenland), 1987.

UNESCO (Hrsg.), United Nations Educational, Scientific and Cultural Organization (UNESCO): Convention concerning the Protection of the World Cultural and Natural Heritage – 1972, Paris ,I , Art. 1–3

UNESCO (Hrsg.),. Convention for the Safeguarding of the Intangible Cultural Heritage, Paris, 2003

Vondruška, V., Zemědělské nářadí. Průvodce po sbírkovém fondu muzea Šumavy, Sušice (Muzeum Šumavy), 1987

Záruba, V., Koblasa, P., Šumava. Mistopísny slovník. – Böhmerwald. Topographisches Wörterbuch, České Budějovice, Plzeň (Historicko-vlastovědný spolek v Českých Budějovicích), 2006

Photograph: Michael Bartoš, Ivo Hajn, agency NEBE
Exemplary illustration it is impossible to reproduce.

NEBE s.r.o. © 2008

www.nebe.eu